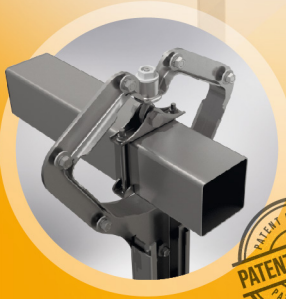




**SOLAR MONTAJ
SİSTEMLERİ**

ERL Solar Tracker



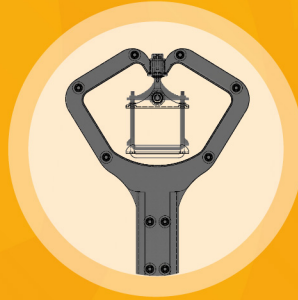
**100% STEEL
SWING BEARING**



**OFFSETTED DRIVE
ROTATION AXIS**



**COMPATIBLE WITH ALL
FRAMED MODULES**



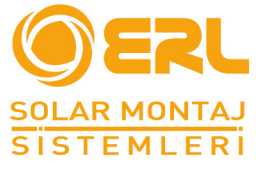
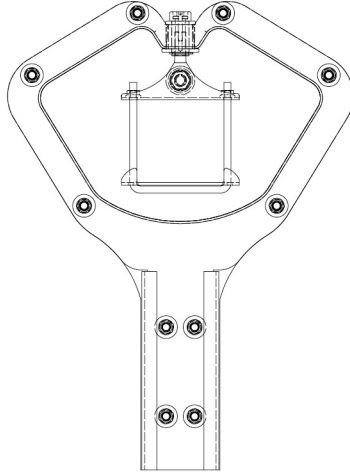
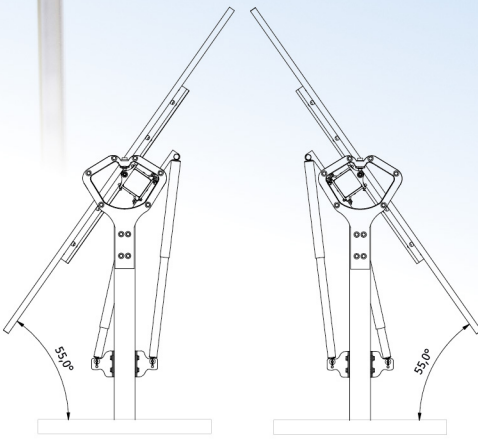
**HIGH TOLERANCE
INSTALLATION CAPABILITY**



**SYMMETRICAL DAMPERS
FOR MAXIMUM STABILITY**



**100% ERL TRACKING AND
CONTROL SYSTEM**



Technical Specifications

Tracking System	Single Axis / Independent Row
Module Configuration	1 in Portrait
String Structure	1500 V; 1000 V
Module Capacity	3x1500 V or 4x1000 V Standard (60-90 Modules) Partial Structures Applicable
Drive Type	Slew Drive with Swing System
Motor Type	24 V DC Brushless Motor
Module Ground Clearance	0,3-0,8 meters
Module Compatibility	All Framed Modules
Tracking Range	$\pm 55^\circ$
Temperature Range	-20°C - +60°C
Module Connection	Bolted Connection from Module Frames
Materials	Galvanized Steel, Pregalvanized Steel, Stainless Steel
Wind Speed	36 m/s (130 kph) (10 min mean) 52 m/s (190 kph) (3 second gust)
Wind Protection	Stow position over certain wind speed values and stability with symmetrical dampers
Foundation Type	Ramming, Pre-Drilling and Concrete Base Options

Electronics and Controls

Tracking Method	Astronomical Algorithm Backtracking
Communication	LoRa Wireless Communication Modbus RS-485 Wired Communication
Night Stow	Yes
Power Supply	220 V AC Powered

Installation, Operation and Service

Statical Calculations	Yes
Installation Manual	Yes
On-site Training and Support	Yes
Installation Requirements	100% Bolted Connections No Cutting, Drilling, Welding On-site
Operation-Supervision	WEB Based Supervision and Control System
Warranty	10 Year Structural, 5 Year Mechanical and Control Components
Codes and Standards	IP65